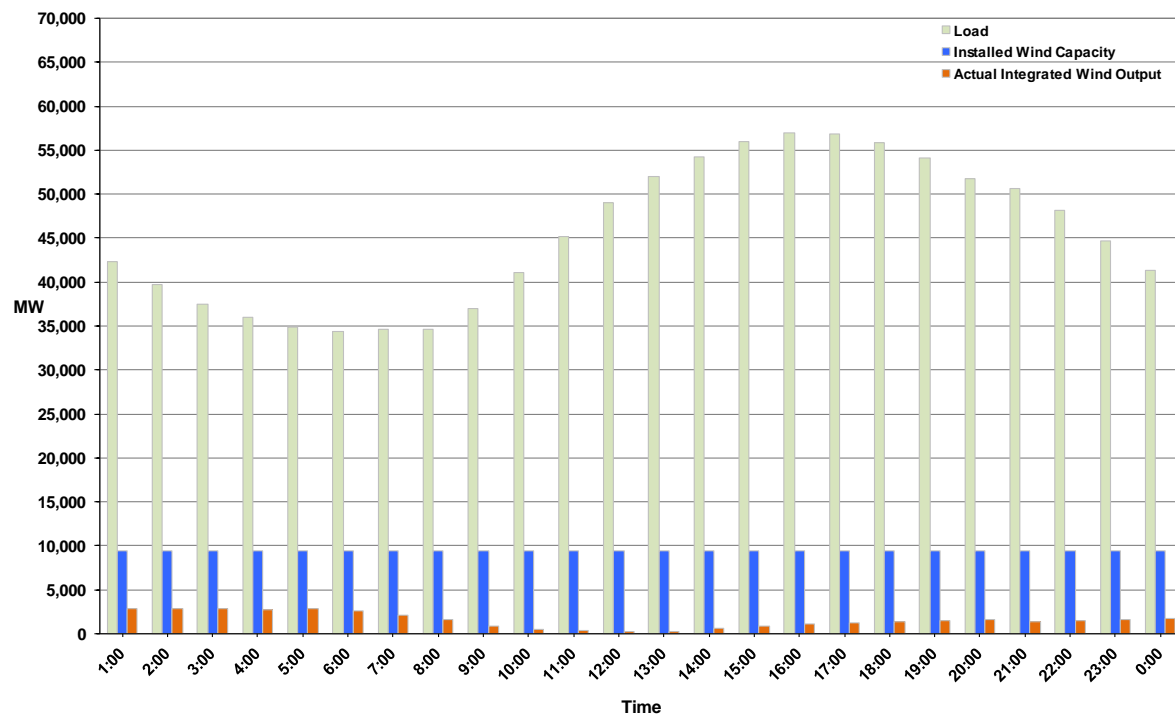




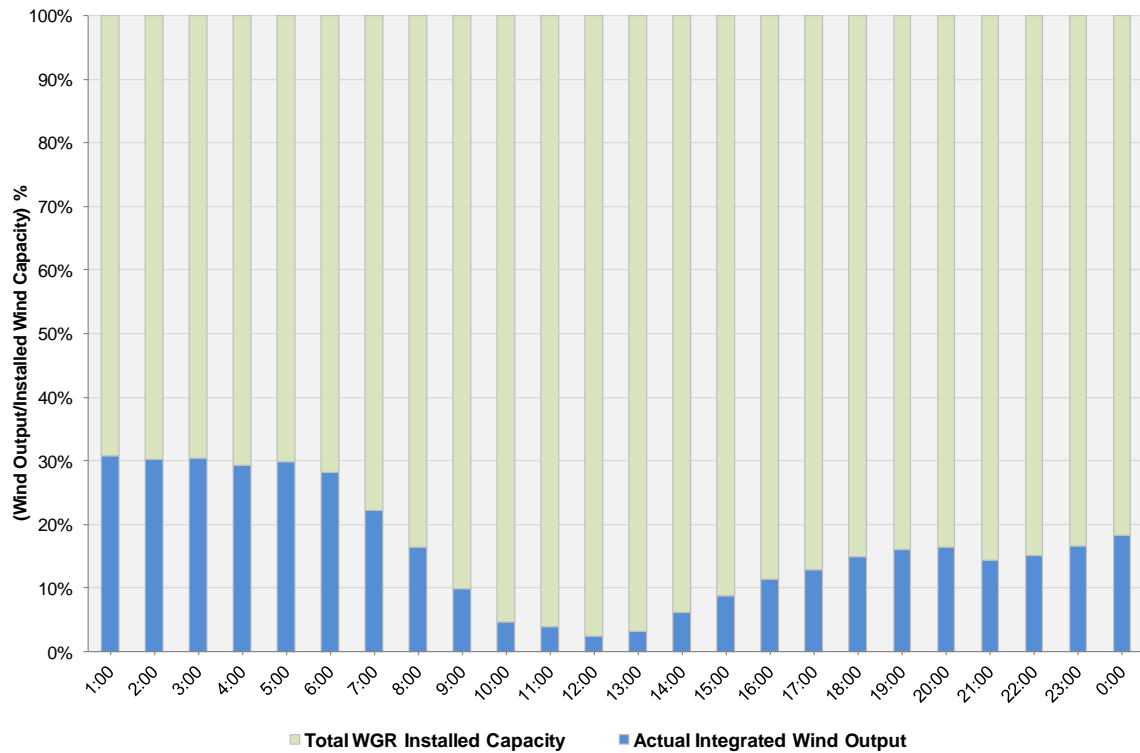
## ERCOT Grid Operations Wind Integration Report: 09/03/11

Peak Load	<b>56,919 MW</b>
Load Peak Hour	<b>16</b>
Wind over Peak	<b>1,067 MW</b>
Wind Record 06/19/11	<b>7,355 MW</b>
Max Wind Value	<b>2,990 MW</b>
Wind Peak Time	<b>00:32:32</b>
Wind Integration %	<b>7.09%</b>

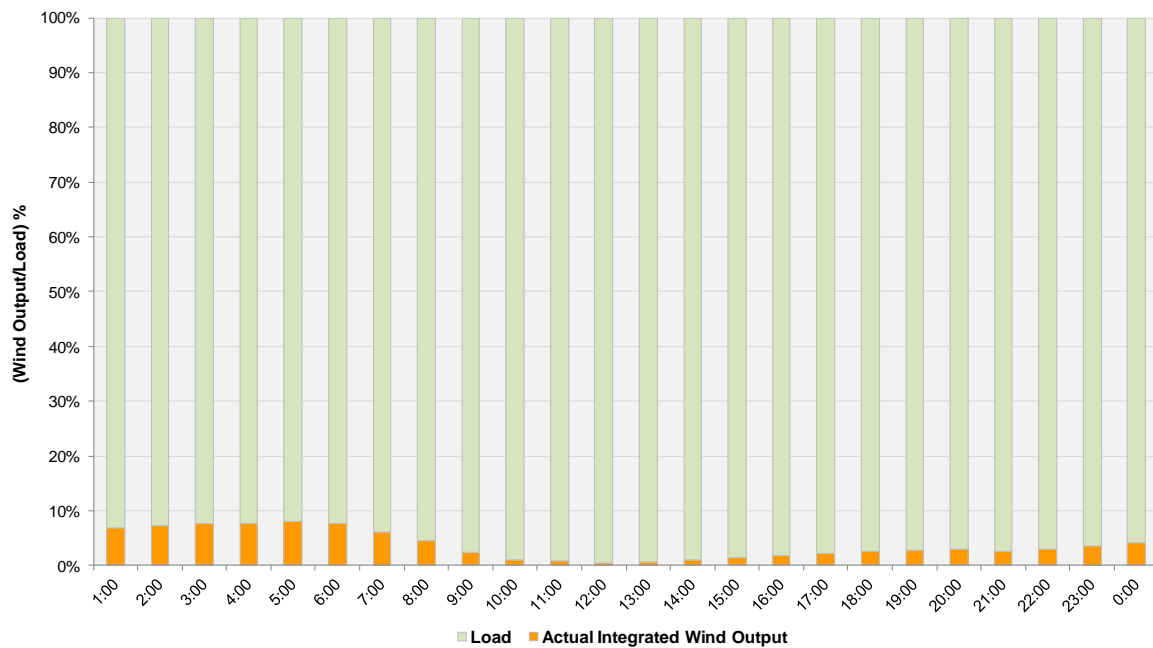
**Hourly Average Actual Load vs. Actual Wind Output  
09-03-2011**



**Actual Wind Output as a Percentage of the Total Installed Wind Capacity**  
**09-03-2011**



**Actual Wind Output as a Percentage of the ERCOT Load**  
**09-03-2011**



ERCOT Load vs. Actual Wind Output 8/27/2011 - 9/3/2011

